

PCSU1000 Driver Installation

These instructions are for Windows 7 but the same basic process applies to most versions of Windows.

Download and extract the driver files to a folder from:

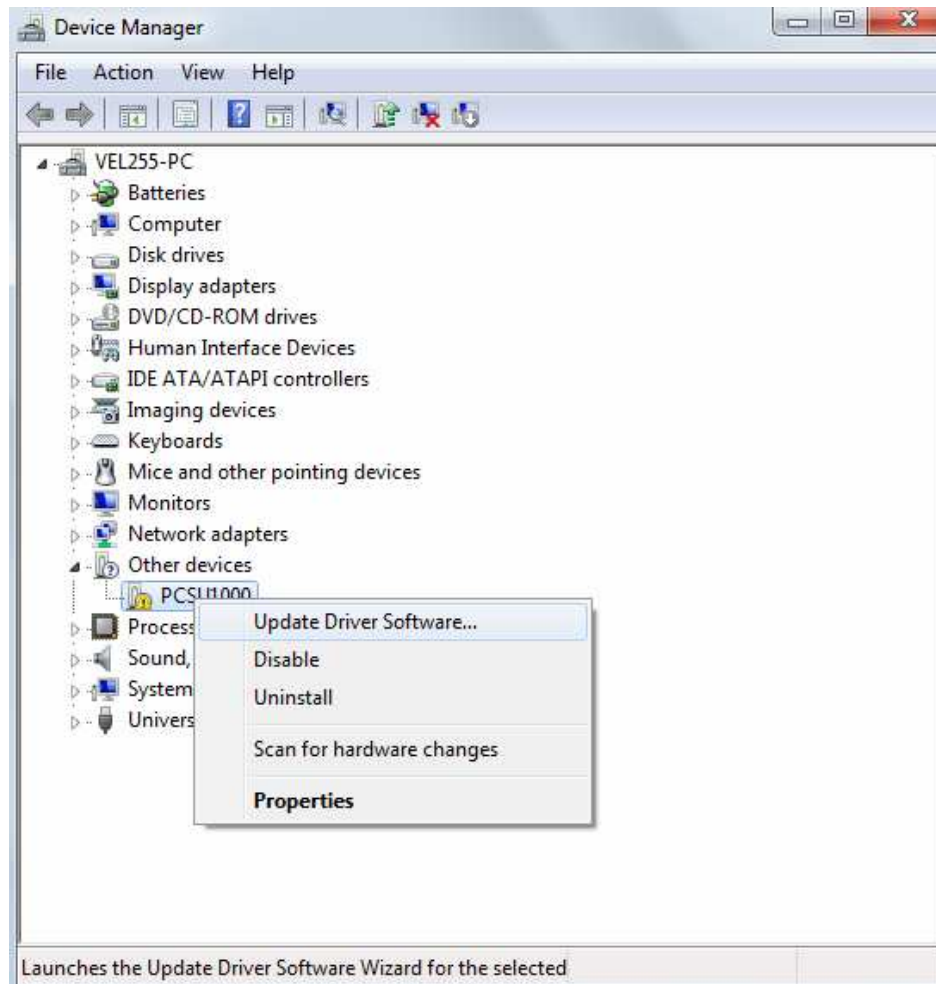
http://www.velleman.eu/downloads/files/downloads/pcsu1000_driver_2_04_16.zip

Then plug in the USB connector of the PCSU1000 oscilloscope.

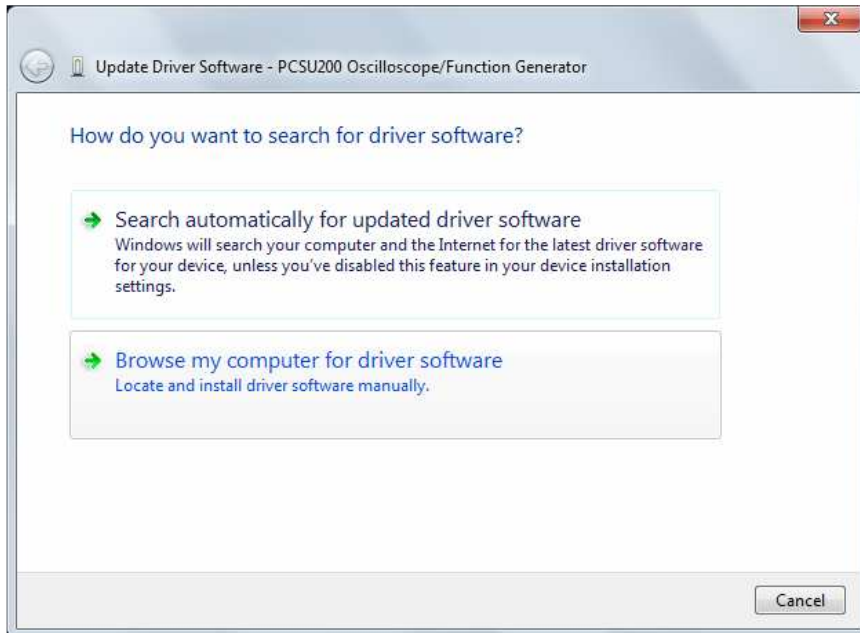
You should be prompted with the Windows *'Found New Hardware Wizard'*.

If the wizard did not open, you can open it manually through the following steps:

- Press the **Windows key + R**
- Type **devmgmt.msc** and press **OK**
- Search for a **'PCSU1000'** entry under the *Other devices* category in the Device Manager
- Right-click the entry and click **Update Driver Software...**



You should now be prompted with the **'Update Driver Software'** dialog.

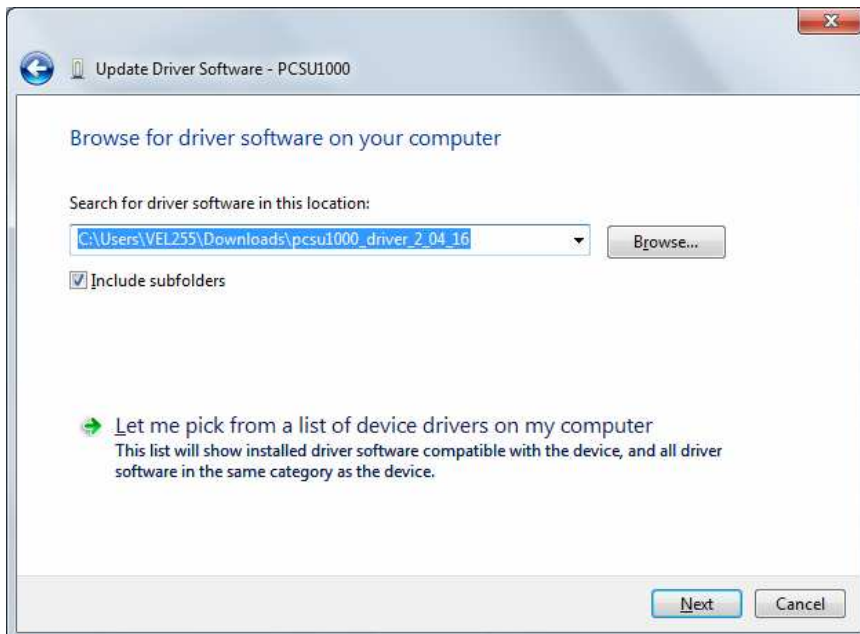


Select **'Browse my computer for driver software'**.

You will be asked for the location of your driver files.

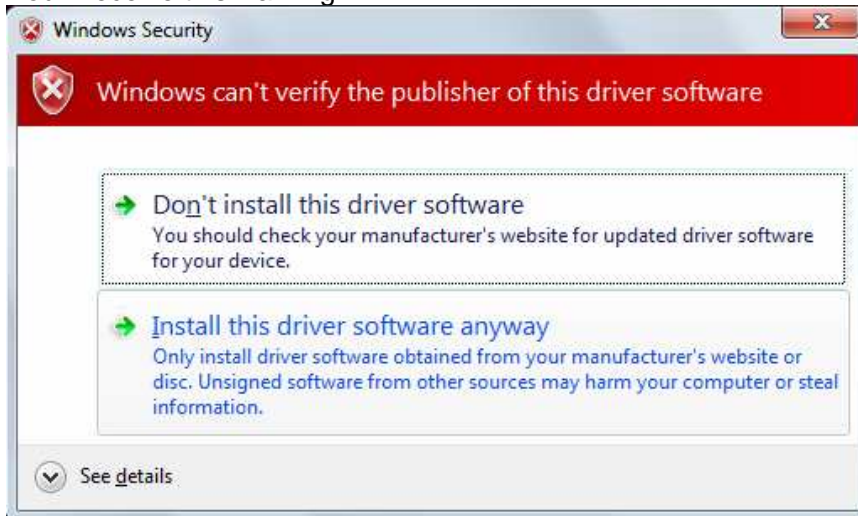
Use **Browse** to locate the folder of the extracted driver files.

E.g. C:\Users\\Downloads\pcsu1000_driver_2_04_16



Click **'Next'** to continue.

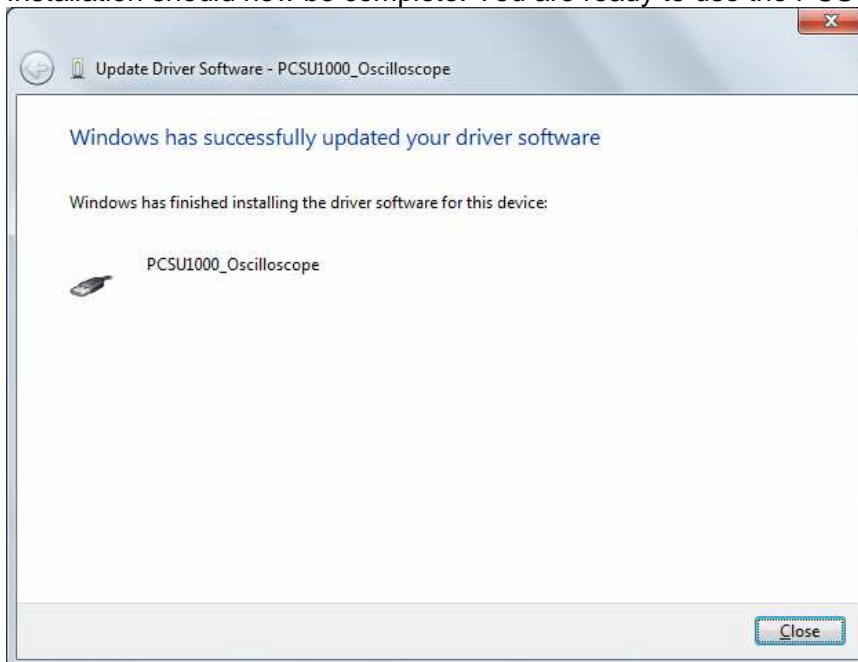
You'll receive this warning.



Click '**Install this driver software anyway**'.

This cannot harm your computer since it is safe to use our driver. Make sure you downloaded the driver or installation package from the Velleman website.

Installation should now be complete. You are ready to use the PCSU1000.



You may check the 'PCSU1000' entry under the *Universal Serial Bus controllers* category in the Device manager.
To check the driver version, right click the PCSU1000 and then click Properties and then select the Driver tab.

